



# EDINBURG CISD

## PURCHASING DEPARTMENT

411 N. 8<sup>th</sup> Ave., Edinburg, TX 78541  
(956) 289-2311, (956) 383-7687

DOMINGA "MINGA" VELA, President  
CARMEN GONZÁLEZ, Vice President  
OSCAR SALINAS, Secretary  
LUIS ALAMIA, Member  
MIGUEL "MIKE" FARIAS, Member  
LETICIA "LETTY" GARCIA, Member  
XAVIER SALINAS, Member

*Dr. Mario H. Salinas, Superintendent*

## ADDENDUM 1

CSP 22-69

### **Freddy Gonzalez Elementary School Heating & Air Condition (HVAC) Improvements Funded through the Elementary & Secondary Emergency Relief (ESSER) Funds March 28, 2022**

#### I. INSTRUCTIONS:

- A. The following changes, omissions or alterations to the specification and drawings shall be made insofar as the specifications and drawings are inconsistent with following, this addendum shall govern.
- B. Acknowledge receipt of this addendum by inserting its number and date of issue in the place provided for same in the proposal. This addendum forms a part of the Contract Documents.
- C. It is imperative that this addendum be inserted INTO set of specifications.

#### II. SEE ADDENDUM BELOW:

##### **Item No. 1 Mechanical Schedules**

- A. Revised Schedules for FCU-1 through FCU-26.
- B. Revised Schedules for FCU-27 through FCU-30.

##### **Item No. 2 Clarification**

- A. Wooden base shall be removed. New base does not need to be painted with fire retardant paint. Refer to mechanical details for base requirements.

##### **Item No. 3 Opening of Proposals:**

- A. Opening of proposals modified to Wednesday, April 13, 2022, 3:00 PM

Respectfully Submitted,

Amaro Tijerina  
Director of Purchasing

\_\_\_\_\_  
(Signature of authorized officer)

\_\_\_\_\_  
Date

#### **Nondiscrimination Statement**

It is the policy of Edinburg CISD not to discriminate on the basis of gender, age, handicap, religion, race, color, or national origin in its educational programs.  
Es poliza del Distrito Escolar de Edinburg el no discriminar por razones con base en genero, edad, religion, raza, color origen nacional, ni discapacidad dentro de sus programas educacionales.

## Addendum

**DATE**

3/23/2022

**ADDENDUM NO.**

1

**PROJECT**

218007.003 | Edinburg CISD - Freddy Gonzalez ES - HVAC Improvements

The work described herein shall be added to the scope of work defined by the contract documents or it shall modify the scope of work defined by the contract documents as described. This work shall become a part of the contract documents by addendum.

### DRAWINGS

**Item 01**      **Sheet M5.01 – Mechanical Schedules**

- A.      Revised Schedules for FCU-1 through FCU-26.
- B.      Revised Schedules for FCU-27 through FCU-30.

**Item 02**      **Question**

- A.      What are we to do with the wooden base for the split systems? At the Pre-bid it is on our understanding you want them lowered to match the new units, are we to re-utilize and paint with fire retardant paint..? are the bases to be replaced with non-flammable materials? Please advise
- B.      Answer: Wooden base shall be removed. New base does not need to be painted with fire retardant paint. Refer to mechanical details for base requirements.

END OF ADDENDUM



AIR DEVICE SCHEDULE			
MARK	MFR. & MODEL	TYPE	REMARKS
A	TITUS TMS-AA	LOUVERED FACE SUPPLY AIR DIFFUSER	24"x24" FACE, ALUMNUM CONSTRUCTION WITH FRAME FOR LAY-IN CEILING.
B	TITUS PAR-AA	PERFORATED FACE RETURN AIR GRILLE	24"x24" FACE, ALUMNUM CONSTRUCTION WITH FRAME FOR LAY-IN CEILING. PROVIDE 22"x22" NECK UNLESS OTHERWISE NOTED. PROVIDE O.B.D. FOR DUCTED EXHAUST.
C	TITUS TMS-AA	LOUVERED FACE SUPPLY AIR DIFFUSER	24"x24" FACE, ALUMNUM CONSTRUCTION WITH FRAME FOR SURFACE MOUNT.
D	TITUS PAR-AA	PERFORATED FACE RETURN AIR GRILLE	24"x24" FACE, ALUMNUM CONSTRUCTION WITH FRAME FOR GYP- BOARD CEILING. PROVIDE 22"x22" NECK UNLESS OTHERWISE NOTED. PROVIDE O.B.D. FOR DUCTED EXHAUST.
E	TITUS 300FL	SIDEWALL SUPPLY AIR GRILLE	ALUMNUM CONSTRUCTION WITH FRAME FOR SURFACE MOUNT. 3/4" BLADE SPACING, DOUBLE DEFLECTION WITH FRONT BLADES PARALLEL TO LONG DIMENSION. PROVIDE O.B.D.
F	TITUS 350FL	SIDEWALL RETURN AIR GRILLE	ALUMNUM CONSTRUCTION WITH FRAME FOR SURFACE MOUNT. 3/4" BLADE SPACING, 35° DEFLECTION WITH BLADES PARALLEL TO LONG DIMENSION. PROVIDE O.B.D. FOR DUCTED EXHAUST.

- NOTES:
- PROVIDE STANDARD WHITE FINISH FOR ALL AIR DEVICES UNLESS NOTED OTHERWISE ON PLAN.
  - PAINT ALL SURFACES VISIBLE THROUGH FACE OF RETURN AIR GRILLES FLAT BLACK. THIS SHALL INCLUDE PIPING, CONDUIT, DUCTWORK, AND STRUCTURAL MEMBERS.
  - PROVIDE FRAME FOR MOUNTING AIR DEVICE IN LAY-IN GRID CEILING UNLESS REFLECTED CEILING PLAN INDICATES HARD CEILING. IN AREAS WITH HARD CEILINGS, PROVIDE FRAMES FOR SURFACE MOUNTING. PROVIDE REMOTE OPERATORS AND DAMPERS.
  - UNLESS OTHERWISE NOTED, BRANCH DUCTS SERVING AIR DEVICES SHALL BE SAME SIZE AS NECK OF AIR DEVICE.

#### LOUVER SCHEDULE

MARK	L-1 THROUGH L-32
SERVICE	FCU OUTSIDE AIR
SIZE (WIDTH X HEIGHT)	16" X 14"
CFM	335
MAX. FREE AREA VELOCITY (FPM)	625
MIN. FREE AREA (S.F.)	0.54
MAX. P.D. (IN. W.G.)	0.1
MANUFACTURER	GREENHECK
MODEL NO.	EVH-501D
NOTES	1, 2, 3

- NOTES:
- PROVIDE WITH INSECT/BIRD SCREEN.
  - PERFORMANCE OF LOUVER SHALL BE VERIFIED BY AMCA PUBLICATION 550 AND 540.
  - PAINT COLOR BY OWNER.

#### DX SPLIT SYSTEM SCHEDULE (ELECTRIC HEAT)

INDOOR UNIT	MARK	FCU-1 THROUGH FCU-26	FCU-27 THROUGH FCU-30	FCU-31	FCU-32	FCU-33 THROUGH FCU-35	FCU-36 THROUGH FCU-39	AHU-1	AHU-2	
		CLASSROOM	CLASSROOM	COMPUTER LAB 113	COMPUTER LAB 112	ADMINISTRATION	CAFETERIA	LIBRARY	KITCHEN	
GENERAL	SERVES									
	SUPPLY AIR (CFM)	950	950	1,250	1,250	1,250	1,450	6,500	4,000	
	OUTSIDE AIR (CFM)	335	335	335	335	175	700	1,915	600	
	EXT. SP. (IN. W.G.)	0.8	0.8	0.8	0.8	0.8	0.8	1.0	1.0	
	FAN MOTOR HORSEPOWER	1	1	1	1	1	1.12	7.5	3	
	BELT/DIRECT DRIVE	DIRECT/ECM	DIRECT/ECM	DIRECT/ECM	DIRECT/ECM	DIRECT/ECM	DIRECT/ECM	BELT	BELT	
	TOTAL COOLING (MBH)	39.1	39.1	52.7	52.7	41.0	106.1	271.9	117.4	
	SENSIBLE COOLING (MBH)	29.1	29.1	36.7	36.7	31.3	70.9	192.6	98.96	
	ENTERING AIR TEMP. DB/WB (F)	82.8/67.7	82.8/67.7	80.0/66.6	80.0/66.6	78.0/64.6	85.8/69.9	81.5/67.0	78.3/64.8	
	LEAVING AIR TEMP. DB/WB (F)	54.89/54.47	54.89/54.47	53.2/52.67	53.2/52.67	55.16/53.6	53.29/53.07	54.49/53.3	56.6/55.4	
HEATING	TOTAL HEATING (KW) / STAGES	8 / 2	8 / 2	10 / 2	10 / 2	8 / 2	14 / 2	53 / SCR	25	
	ENTERING AIR TEMP. DB (F)	58	58	60	60	65	60	70	70	
	LEAVING AIR TEMP. DB (F)	84.91	84.91	85.29	85.29	85.23	83.5	85.78	82.59	
	VOLTS/PHASE/HERTZ	240/3/60	240/1/60	240/3/60	240/3/60	240/3/60	240/3/60	240/3/60	240/3/60	
ELECTRIC	MCA	30.08	51.33	36.11	36.11	50.22	50.22	77	77	
	MOCP	35	60	40	40	35	60	90	80	
	MANUFACTURER	TRANE	TRANE	TRANE	TRANE	TRANE	TRANE	TRANE	TRANE	
	MODEL	BCCD036	BCCD036	BCCD036	BCCD036	BCCD036	BCHD	UCCA12	TWE120	
BASIS	WEIGHT (LBS)	196	198	196	196	188	244	908	429	
	NOTES	4,5,7,8,9,10	4,5,7,8,9,10	4,5,7,8,9,10	4,5,7,8,9,10	4,5,7,8,9,10	4,5,7,8,10,11	4,5,7,10,12,13	4,5,7,10,12,13	
	MARK	CU-1 THROUGH CU-26	CU-27 THROUGH CU-30	CU-31	CU-32	CU-33 THROUGH CU-35	CU-36 THROUGH CU-37	ACCU-1	ACCU-2	
GENERAL	STEPS OF CAPACITY	INF	INF	INF	INF	INF	INF	INF	INF	
	EER/IEER (ARI)	12.5/15	13/15.5	12.25/14.5	12.25/14.5	12.5/15	11.3 / 13.3	10.1 / 12	11.3 / 13.3	
	AMBIENT AIR	105	105	105	105	105	105	105	105	
	VOLTS/PHASE/HERTZ	240/3/60	240/1/60	240/3/60	240/3/60	240/3/60	240/3/60	240/3/60	240/3/60	
	ELECTRIC	MCA	15	21	21	21	18	46	102	41
		MOCP	25	35	35	35	30	50	125	50
		MANUFACTURER	TRANE	TRANE	TRANE	TRANE	TRANE	TRANE	TRANE	TRANE
	BASIS	MODEL	4TTA4042	4TTR8042	4TTA4060	4TTA4060	4TTA4048	TTA120	TTA300	TTA120
		NOMINAL TONS	3.5	3.5	5	5	4	10	25	10
		WEIGHT (LBS)	184	252	248	248	221	383	857	417
NOTES		1,2,3,4,6,7	1,2,3,4,6,7	1,2,3,4,6,7	1,2,3,4,6,7	1,2,3,4,6,7	1,2,3,4,6,7	1,2,3,4,6,7	1,2,3,4,6,7	

- NOTES:
- PROVIDE CONDENSER COIL HAIL GUARDS. PROVIDE E-COATING ON CONDENSER COIL.
  - PROVIDE LOW AMBIENT CONTROL DOWN TO 55 DEGREE AMBIENT.
  - PROVIDE REFRIGERANT PIPING IN STRICT ACCORDANCE WITH MANUFACTURER'S RECOMMENDATIONS.
  - PROVIDE SINGLE POINT ELECTRICAL CONNECTION WITH NON-FUSED DISCONNECT.
  - PROVIDE WITH UNIT CONTROLLER WITH BACNET INTERFACE.
  - PROVIDE WITH WITH FACTORY MOUNTED AND TESTED APR VALVE FOR CAPACITY CONTROL.
  - PROVIDE 5 YEARS PARTS AND LABOR WARRANTY.
  - PROVIDE WITH FULLY VARIABLE SPEED ECM SUPPLY FAN MOTOR.
  - PROVIDE WITH 2" MERV-13 FILTER. PROVIDE WITH FILTER BANK UNDERNEATH UNIT, UNIT EXTERNAL STATIC DOES NOT INCLUDE FILTER LOSSES.
  - PROVIDE WITH MOTORIZED DAMPER ON OUTSIDE AIR DUCT. MOTORIZED DAMPER SHALL BE INTERLOCKED WITH FCU OPERATION. MOTORIZED DAMPER SHALL OPEN WHEN FCU/AHU IS ENERGIZED AND CLOSE WHEN FCU/AHU IS DE-ENERGIZED.
  - PROVIDE WITH ECONOMIZER CONTROL.
  - PROVIDE WITH 2" MERV-13 FILTER. EXTERNAL STATIC DOES NOT INCLUDE FILTER LOSSES.
  - PROVIDE WITH EXTERNAL VFD.

#### GRAVITY HOOD SCHEDULE

MARK	GH-1	GH-2	GH-3	GH-4	GH-5	GH-6	GH-7	GH-8	GH-9	GH-10	GH-11
SERVES	ADMIN FCU-33	ADMIN FCU-34	ADMIN FCU-35	CAFETERIA FCU-36	CAFETERIA FCU-37	CAFETERIA FCU-38	CAFETERIA FCU-39	LIBRARY AHU-1	KITCHEN AHU-2	CAFETERIA RELIEF	CAFETERIA RELIEF
CFM	175	175	175	1,450	1,450	1,450	1,450	1,915	800	2,900	2,900
MAX. P.D. (IN. W.G.)	0.1	0.1	0.1	0.1	0.1	0.1	0.1	0.1	0.1	0.1	0.1
INTAKE/RELIEF	INTAKE	INTAKE	INTAKE	INTAKE	INTAKE	INTAKE	INTAKE	INTAKE	INTAKE	RELIEF	RELIEF
THROAT SIZE (IN.)	8.25	8.25	8.25	20.25	20.25	20.25	20.25	20X20	16X10	24X24	24X24
MANUFACTURER	GREENHECK	GREENHECK	GREENHECK	GREENHECK	GREENHECK	GREENHECK	GREENHECK	GREENHECK	GREENHECK	GREENHECK	GREENHECK
MODEL NO.	GRS1-8	GRS1-8	GRS1-8	GRS1-20	GRS1-20	GRS1-20	GRS1-20	FGI	FGI	FGR	FGR
NOTES	1	1	1	1	1	1	1	1	1	2,3	2,3

- NOTES:
- PROVIDE WITH PREFABRICATED ROOF CURB AND INSECT SCREEN. PROVIDE WITH MOTORIZED DAMPER INTERLOCKED WITH FAN COIL UNIT OPERATION.
  - PROVIDE BAROMETRIC DAMPER SIMILAR TO RUSKIN CBD8 SET AT 0.05 IN. WG. 0.125" EXTRUDED AL FRAME, 0.070" BLADES W/ VINYL EDGE SEALS.
  - PROVIDE WITH PREFABRICATED ROOF CURB AND INSECT SCREEN.

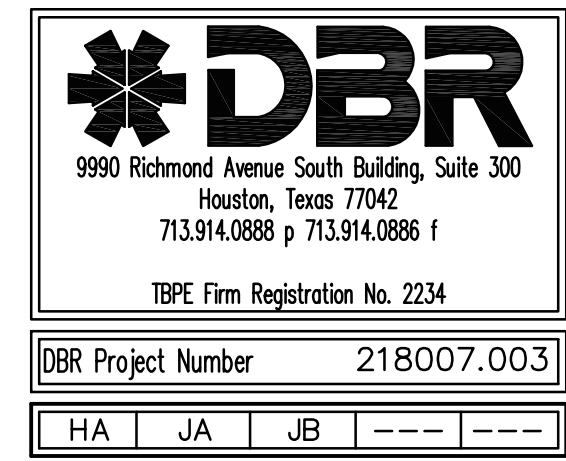


210.546.0200 v. 210.546.0201 f  
9601 McAllister Freeway, Suite 410  
San Antonio, Texas 78216  
TBP Firm Registration No. 2234



EDINBURG CONSOLIDATED INDEPENDENT SCHOOL DISTRICT  
**FREDDY GONZALEZ ES - HVAC IMPROVEMENTS**  
 2401 SUGAR RD, EDINBURG, TX 78539

DATE: 03/01/2022  
 DRAWN BY: DBR  
 CHECKED BY: DBR  
 PROJECT NUMBER: 218007.003  
 SHEET TITLE: MECHANICAL SCHEDULES  
 SHEET NUMBER: M5.01



DBR Project Number	218007.003			
HA	JA	JB	---	---

P:\check\_Mar\_23\_2022\_3:16 PM by user: rjaggers - Search: 03/23/2022 by user: rjaggers  
 C:\Users\rjaggers\ACCD\Doc\DBR\proj\218007\003 - EGSD - District Wide HVAC Improvements - FGES\Project Files\Drawings\04-218007-DETAILS AND SCHEDULES-3.rvt